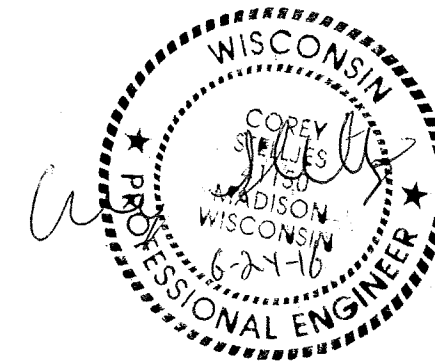


BRITTINGHAM PARK SIDEWALK IMPROVEMENTS

CONTRACT NUMBER 7739
MUNIS NO. 17143

SIDEWALK & STORM SEWER
DESIGNED BY:



City of Madison
Department of Public Works
PARKS DIVISION

City-County Building, Suite 104
210 Martin Luther King, Jr. Blvd.
PO Box 2987
Madison, WI 53701-2987

play
**MADISON
PARKS**



INDEX OF SHEETS

SHEET NO.	TITLE
1	
P1	SITE ACCESS AND EROSION CONTROL
P2	TYPICAL SECTIONS AND DETAILS
P3-P4	PLAN AND PROFILE SHEETS
P5	QUANTITIES AND CALCS
X1-X3	CROSS SECTIONS

PROJECT LOCATION

CONVENTIONAL SIGNS
FIELD VERIFY ALL UTILITY LOCATIONS

GAS	— G —
STORM SEWER	— ST —
SANITARY SEWER	— SAN —
WATER	— W —
OVERHEAD ELECTRIC	— OH —
POWER POLE	□

PROJECT:

**BRITTINGHAM PARK
PARK SIDEWALK
IMPROVEMENTS**

**BRITTINGHAM PARK
201 PROUDFIT ST.
MADISON, WI 53703**

Although every effort has been made in preparing these plans and checking them for accuracy, the contractor and subcontractors must check all details and dimensions of their trade and be responsible for the same.

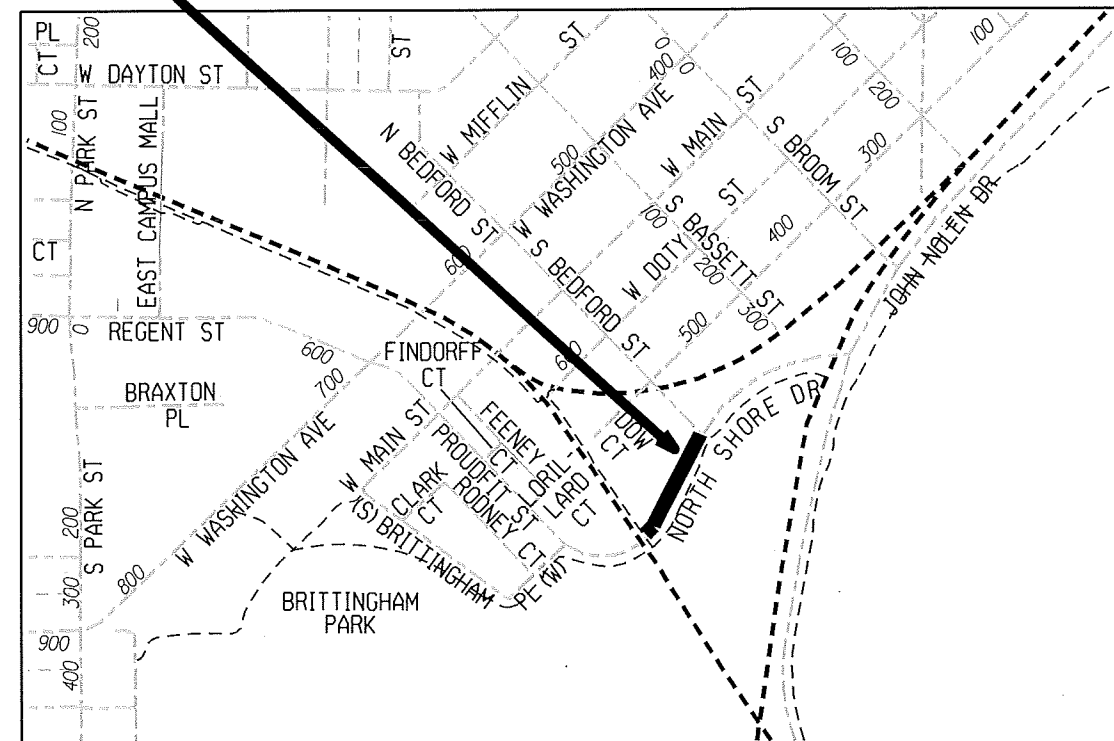
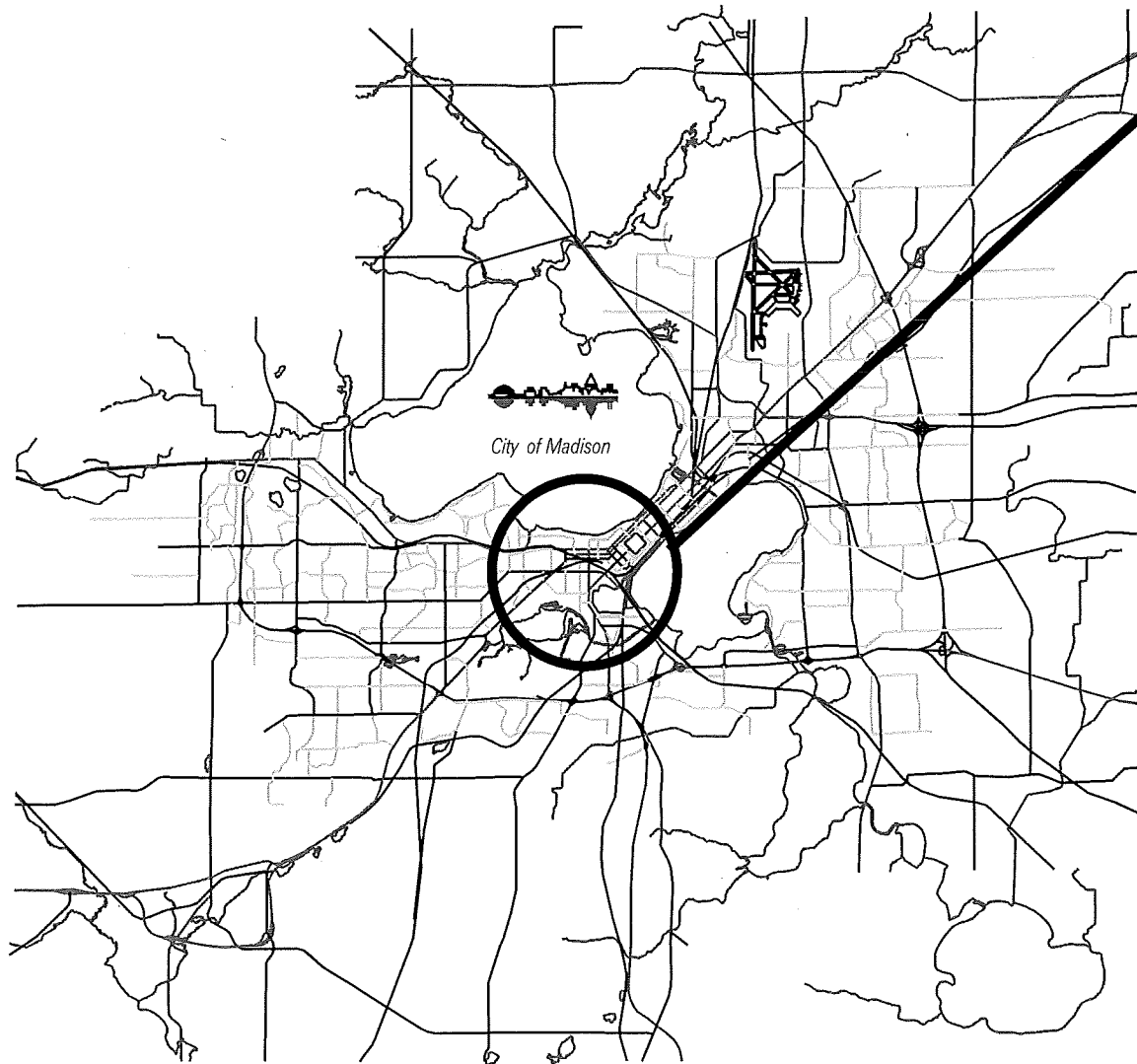
ITEM Advertised by: CCS DATE 06-24-16

Revised by:

PUBLIC WORKS PROJECT: 7739

SHEET TITLE:
TITLE

SHEET NUMBER:
1



EROSION CONTROL NOTES:

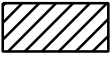








EROSION CONTROL MEASURES SHALL BE IN PLACE PRIOR TO ANY OTHER CONSTRUCTION ACTIVITY.

THE CONTRACTOR IS RESPONSIBLE FOR THE CONSTRUCTION AND MAINTENANCE OF ALL EROSION CONTROL MEASURES UNTIL FINAL ACCEPTANCE BY THE CITY OF MADISON.

THE CONTRACTOR SHALL INSTALL AND MAINTAIN EROSION CONTROL MEASURES IN ACCORDANCE WITH THE WDNR SOC STANDARDS AND CITY OF MADISON STANDARD SPECIFICATIONS.

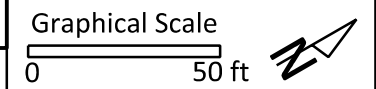
THE CONTRACTOR SHALL PROVIDE STREET CLEANING AS NEEDED ON A DAILY BASIS TO KEEP TRACKING TO A MINIMUM.

INLET PROTECTION SHALL BE INSTALLED WITHIN THE CONSTRUCTION LIMITS. ADDITIONAL INLET PROTECTION SHALL BE INSTALLED AS DIRECTED.

	CONSTRUCTION ENTRANCE
	TYPE D HYBRID INLET PROTECTION
	TYPE C INLET PROTECTION
	SILT SOCK (VELOCITY CHECK)
	CONSTRUCTION FENCING
	EX CONTOUR (INDEX)
	EX CONTOUR (1.0')
	PROPERTY LINE
	SURVEY CONTROL POINT (PROVIDED BY PARKS)

City of Madison
Department of Public Works
PARKS DIVISION

City-County Building, Suite 104
210 Martin Luther King, Jr. Blvd.
PO Box 2987
Madison, WI 53701-2987



PROJECT:
**BRITTINGHAM PARK
PARK SIDEWALK
IMPROVEMENTS**

**BRITTINGHAM PARK
201 PROUDFIT ST.
MADISON, WI**

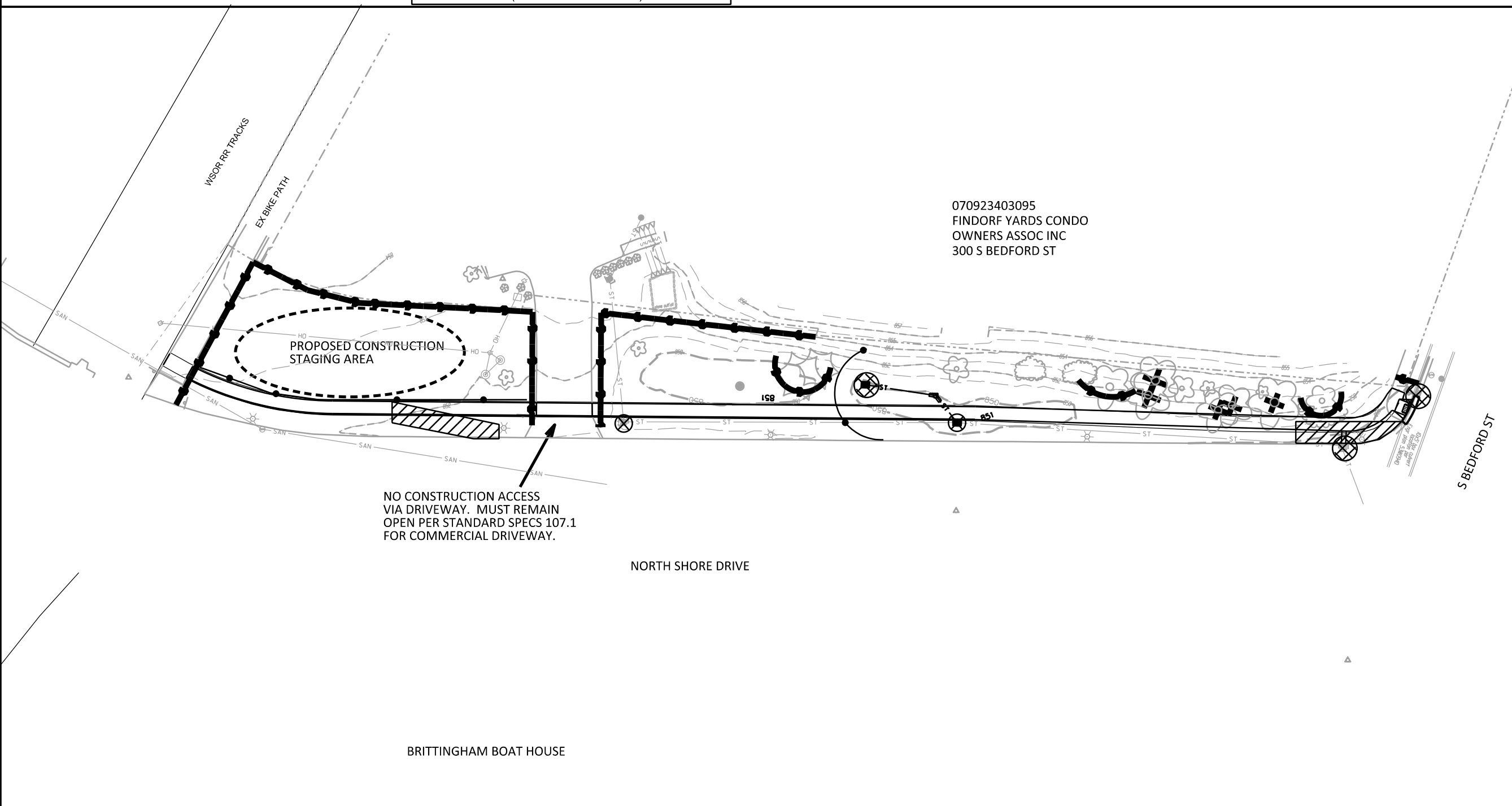
Although every effort has been made in preparing these plans and checking them for accuracy, the contractor and subcontractors must check all details and dimensions of their trade and be responsible for the same.

ITEM	DATE
Drawn by: CS	06-24-16
Revised by:	

PUBLIC WORKS PROJECT: 7739

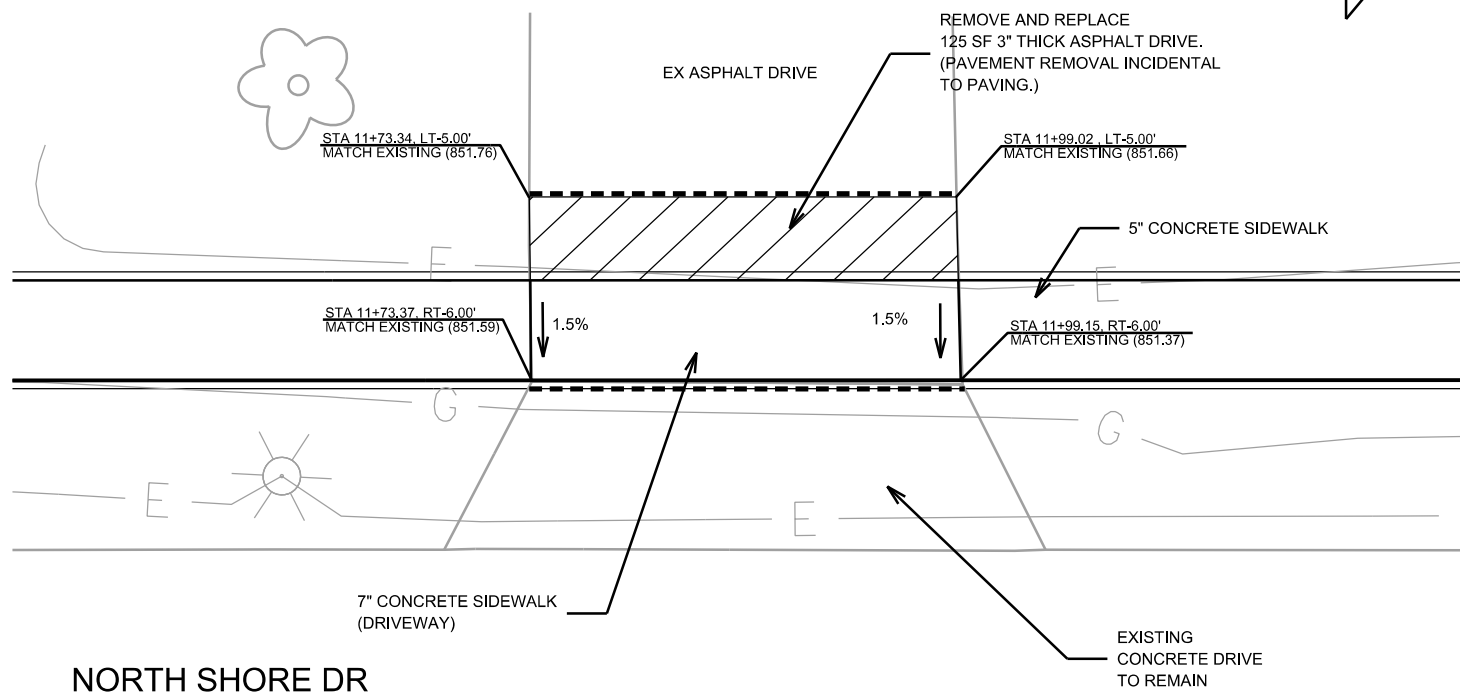
SHEET TITLE:
**SITE ACCESS
AND EROSION
CONTROL**

SHEET NUMBER:
P-1



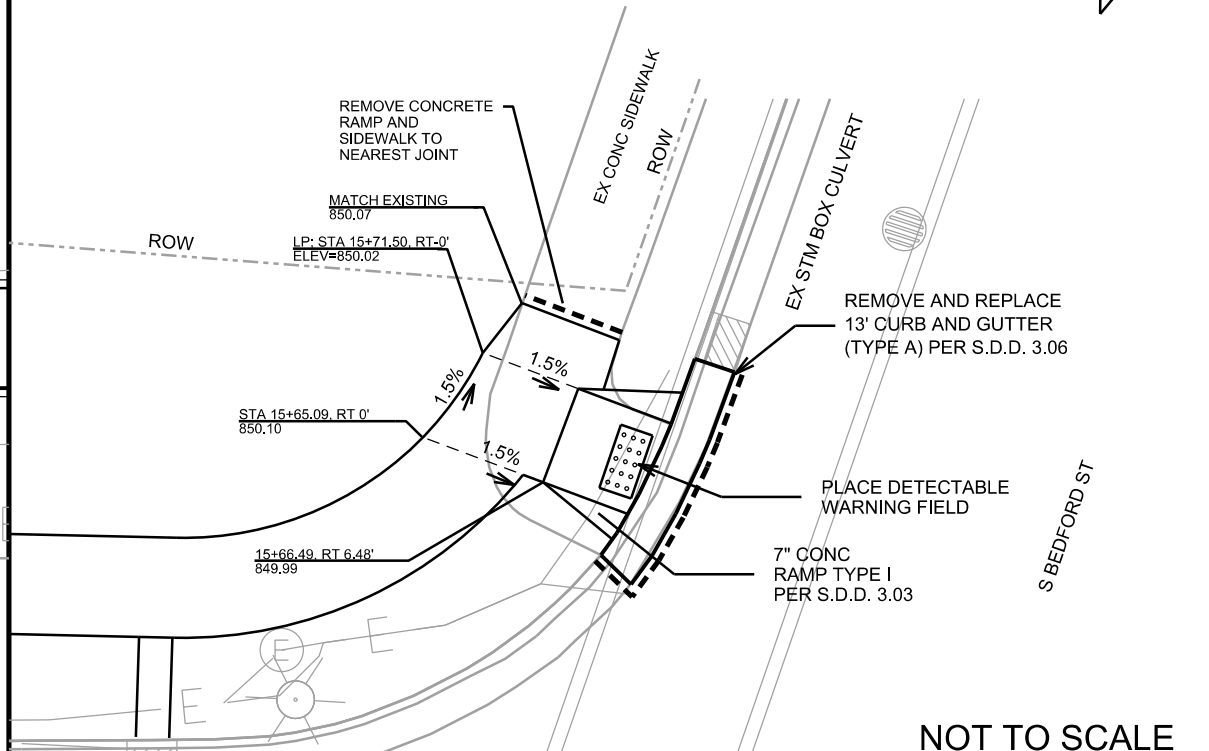
070923403095
FINDORF YARDS CONDO
OWNERS ASSOC INC
300 S BEDFORD ST

FINDORFF DRIVEWAY DETAIL



NOT TO SCALE

S BEDFORD ST RAMP DETAIL



NOT TO SCALE

----- SAWCUT EX PAVEMENT (ALL SAWCUTTING PAID UNDER BID ITEM 20302)

City of Madison
Department of Public Works
PARKS DIVISION

City-County Building, Suite 104
210 Martin Luther King, Jr. Blvd.
PO Box 2987
Madison, WI 53701-2987

play
**MADISON
PARKS**

PROJECT:
**BRITTINGHAM PARK
PARK SIDEWALK
IMPROVEMENTS**

**BRITTINGHAM PARK
201 PROUDFIT ST.
MADISON, WI**

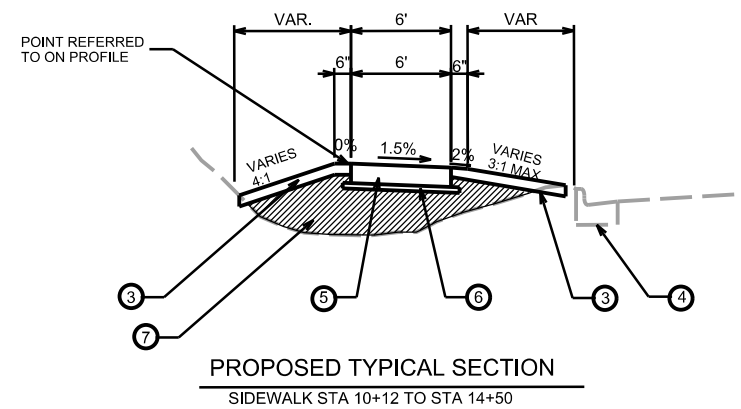
Although every effort has been made in preparing these plans and checking them for accuracy, the contractor and subcontractors must check all details and dimensions of their trade and be responsible for the same.

ITEM _____ DATE _____
Drawn by: CS 06-24-16
Revised by: _____

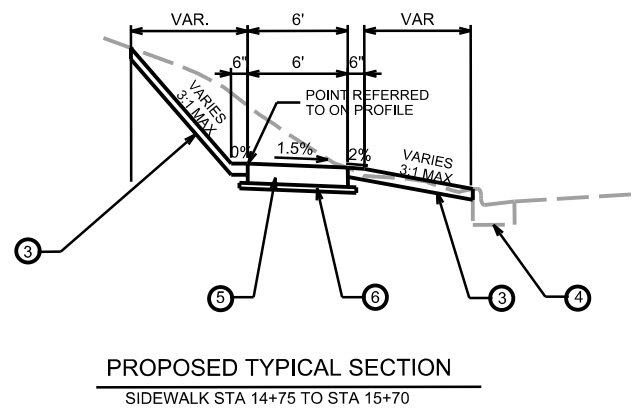
PUBLIC WORKS PROJECT: 7739

SHEET TITLE:
**DETAILS AND
TYPICAL
SECTIONS**

SHEET NUMBER:
P-2



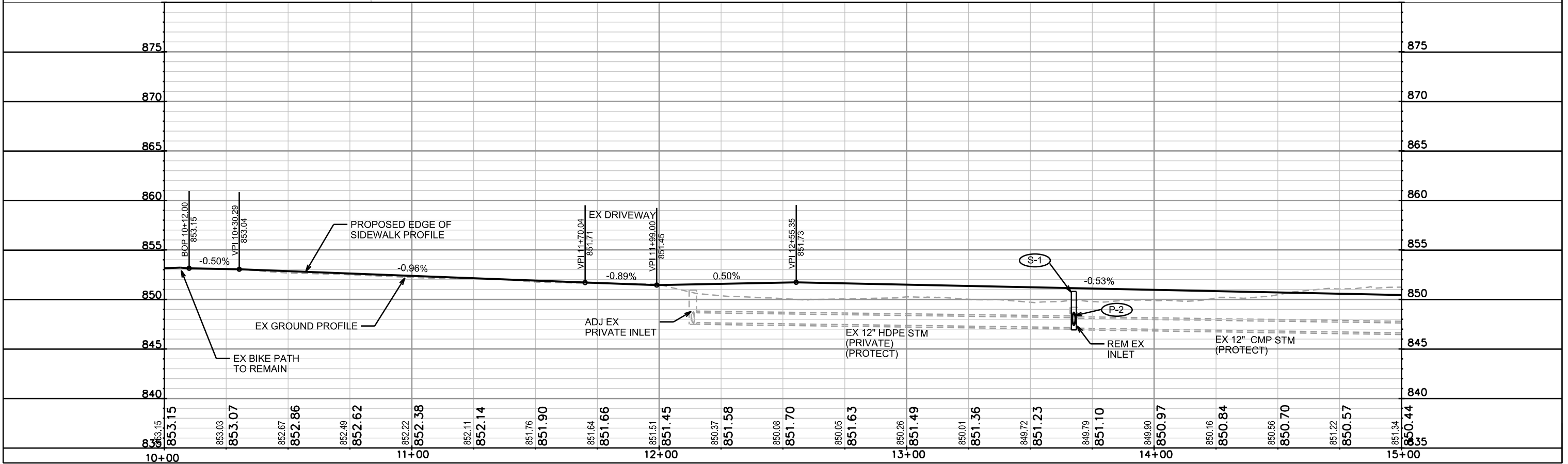
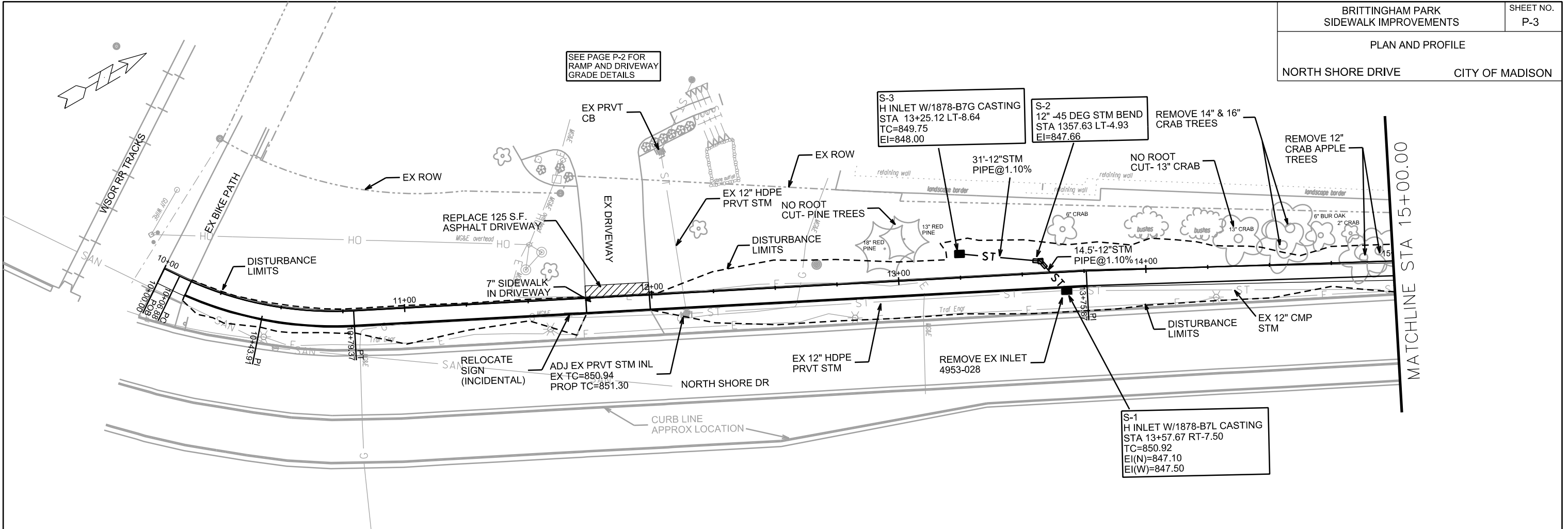
PROPOSED TYPICAL SECTION
SIDEWALK STA 10+12 TO STA 14+50



PROPOSED TYPICAL SECTION
SIDEWALK STA 14+75 TO STA 15+70

LEGEND	
③	6-INCH MIN. TOPSOIL, SEED AND MATTING
④	EXISTING CONCRETE CURB TO REMAIN
⑤	6-INCH CONCRETE SIDEWALK
⑥	2" GRANULAR FILL (INCIDENTAL)
⑦	FILL (BORROW)

NOT TO SCALE
NOTE VERTICAL EXAGGERATION

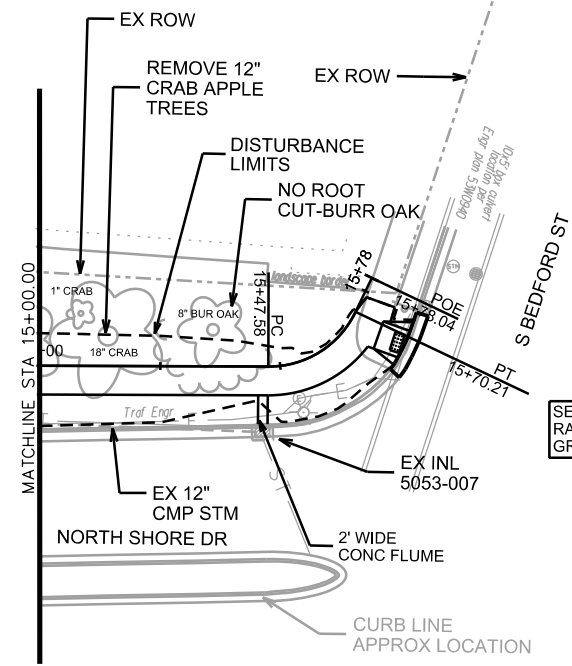
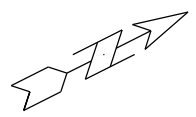


PLOT SCALE: _____

PLOT NAME: _____

REV. DATE: _____

ORIGINATOR: CITY OF MADISON, STREETS DIVISION



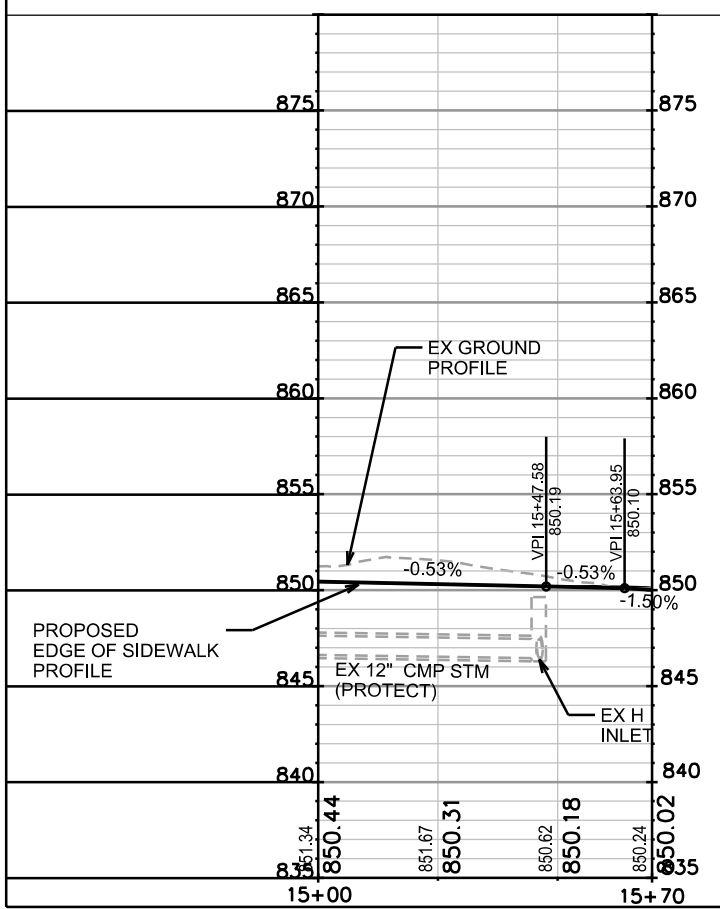
SEE PAGE P-2 FOR
RAMP AND DRIVEWAY
GRADE DETAILS

PLOT SCALE: _____

PLOT NAME: _____

REV. DATE: _____

ORIGINATOR: CITY OF MADISON, STREETS DIVISION



Brittingham Sidewalk Improvements Earthwork Quantities

City of Madison, WI Parks Div
Date Revised: 6/24/2016

Notes:
Positive volumes are cuts, negative volumes are fills.
Not all parts of all surface models (Digital Terrain Models) are used for computations or intended for actual construction.

Existing Ex.dtm: Brit_Survey2015-08-27_NorthShoreCOMB
Proposed Pro.dtm: SW- Proposed

Sort	Grp	Material	Item	From Surface Model	To Surface Model	area (sq ft)	depth (ft)	Unfactored volume (cu ft)	Unfactored volume (cu yd)	Expansion Factor (%)	Factored (Uncompacted) Volume (cu yd)
2.1	Asphalt to Concrete	Asphalt Excavate	Remove estimated 3in asphalt	n/a	n/a	154	0.25	39	1.4	0%	1.4
2.2	Asphalt to Concrete	Gravel (Clean) Excavate	Remove estimated 4in clean gravel base	n/a	n/a	154	0.33	51	1.9	0%	1.9
2.3	Asphalt to Concrete	Gravel (Dirty) Excavate	Remove estimated 2in mixed gravel/subsoil	n/a	n/a	154	0.17	26	1.0	0%	1.0
2.4	Asphalt to Concrete	Subsoil Excavate	Cut subsoil to proposed subgrade	Ex-9in	Pro-9in	154	varies	2	0.1	0%	0.1
2.5	Asphalt to Concrete	Subsoil Place	Fill subsoil to proposed subgrade	Ex-9in	Pro-9in	154	varies	-1	0.0	0%	0.0
2.6	Asphalt to Concrete	Gravel Place	Place 6in gravel base out to 2in from pavement edge	n/a	n/a	154	-0.17	-26	-1.0	0%	-1.0
2.7	Asphalt to Concrete	Concrete Place	Place 7in concrete	n/a	n/a	154	-0.58	-89	-3.3	0%	-3.3
7.1	Concrete to Concrete	Concrete Excavate	Remove 5in concrete	n/a	n/a	105	0.42	44	1.6	0%	1.6
7.3	Concrete to Concrete	Gravel (Dirty) Excavate	Remove estimated 2in mixed gravel/subsoil	n/a	n/a	105	0.17	18	0.6	0%	0.6
7.4	Concrete to Concrete	Subsoil Excavate	Cut subsoil to proposed subgrade	Ex-7in	Pro-7in	105	varies	2	0.1	0%	0.1
7.5	Concrete to Concrete	Subsoil Place	Fill subsoil to proposed subgrade	Ex-7in	Pro-7in	105	varies	-2	-0.1	0%	-0.1
7.6	Concrete to Concrete	Gravel Place	Place 2in gravel base out to 6in from pavement edge	n/a	n/a	105	-0.17	-18	-0.7	0%	-0.7
7.7	Concrete to Concrete	Concrete Place	Place 5in concrete	n/a	n/a	98	-0.42	-41	-1.5	0%	-1.5
7.8	Concrete to Concrete	Topsoil Place	Place 5in topsoil over 6in wide gravel edge	n/a	n/a	7	-0.42	-3	-0.1	0%	-0.1
12.1	Grass to Concrete	Topsoil Excavate	Strip 4in topsoil	n/a	n/a	3732	0.33	1232	45.6	0%	45.6
12.2	Grass to Concrete	Subsoil Excavate	Cut subsoil to proposed subgrade	Ex-4in	Pro-7in	3732	varies	701	26.0	0%	26.0
12.3	Grass to Concrete	Subsoil Place	Fill subsoil to proposed subgrade	Ex-4in	Pro-7in	3732	varies	-1494	-55.3	0%	-55.3
12.4	Grass to Concrete	Gravel Place	Place 2in gravel base out to 6in from pavement edge	n/a	n/a	3732	-0.17	-634	-23.5	0%	-23.5
12.5	Grass to Concrete	Concrete Place	Place 5in concrete	n/a	n/a	3198	-0.42	-1333	-49.4	0%	-49.4
12.6	Grass to Concrete	Topsoil Place	Place 5in topsoil over 6in wide gravel edge	n/a	n/a	534	-0.42	-223	-8.2	0%	-8.2
13.1	Grass to Grass	Topsoil Excavate	Strip 4in topsoil	n/a	n/a	6163	0.33	2034	75.3	0%	75.3
13.2	Grass to Grass	Subsoil Excavate	Cut subsoil to proposed subgrade	Ex-4in	Pro-6in	6163	varies	609	22.6	0%	22.6
13.3	Grass to Grass	Subsoil Place	Fill subsoil to proposed subgrade	Ex-4in	Pro-6in	6163	varies	-2107	-78.0	0%	-78.0
13.4	Grass to Grass	Topsoil Place	Place 6in topsoil	n/a	n/a	6163	-0.50	-3082	-114.1	0%	-114.1
TOTALS								-4296	-159.1		-159.1
Check: Entire area volume existing to proposed Difference								-4255 cu ft			-41 cu ft
Total area per DTM								9345 sq ft			
Sum of polygons								9330 sq ft			
Difference								-15 sq ft			

Derived from more detailed spreadsheet available from Parks Div

Computation Summary
Positive volumes are cuts (material available), negative volumes are fills (material needed)

Row Labels	Sum of Factored (Uncompacted) Volume (cu yd)	Check / Notes
Asphalt Excavate	1.4	Asphalt: 2.16 ton/cy
Concrete Excavate	1.6	Topsoil: 122.5 CY/6"=735 SY
Concrete Place	-54.2	Gravel: 25 CY*2.0 Ton/CY=50 Ton
Gravel (Clean) Excavate	1.9	Asphalt: 1.4 CY*2.16 ton/CY=3 ton
Gravel (Clean) Excavate		Const Entrance: 96 SY*1' Depth*1.9 ton/cy=61 ton Clear Stone
Gravel (Dirty) Excavate	1.6	
Gravel Place	-25.1	
Subsoil Excavate	48.7	
Subsoil Place	-133.5	
Topsoil Excavate	120.9	
Topsoil Place	-122.5	
Grand Total	-159.1	

Reorganized into bid table items

Bid Item	Quantity	Units	Relation to Table Above
20101	EXCAVATION CUT	CY	Topsoil Excavate
20221	TOPSOIL	SY	Topsoil Place/ .167 (depth)*(-1)
40102	CRUSHED AGGREGATE BASE COURSE, GRADATION NO. 2 OR NO. 3	TON	Gravel Place * 2.0 ton/CY
30301	5 INCH CONCRETE SIDEWALK	SF	Place 5" Concrete
30302	7 INCH CONCRETE SIDEWALK & DRIVE	SF	Place 7" Concrete + SW Ramp
20201	FILL BORROW	CY	Subsoil Place-Subsoil Excavate-Dirty Gravel Excavate-clean Gravel Excavate *(-1)

City of Madison
Department of Public Works
PARKS DIVISION

City-County Building, Suite 104
210 Martin Luther King, Jr. Blvd.
PO Box 2987
Madison, WI 53701-2987

play
MADISON PARKS

PROJECT:

**BRITTINGHAM PARK
PARK SIDEWALK
IMPROVEMENTS**

**BRITTINGHAM PARK
201 PROUDFIT ST.
MADISON, WI**

Although every effort has been made in preparing these plans and checking them for accuracy, the contractor and subcontractors must check all details and dimensions of their trade and be responsible for the same.

ITEM DATE
Drawn by: CS 06-24-16

Revised by:

PUBLIC WORKS PROJECT: 7739

SHEET TITLE:
**QUANTITIES
AND CALCS**

SHEET NUMBER:
P-5

CROSS SECTIONS

NORTH SHORE DRIVE

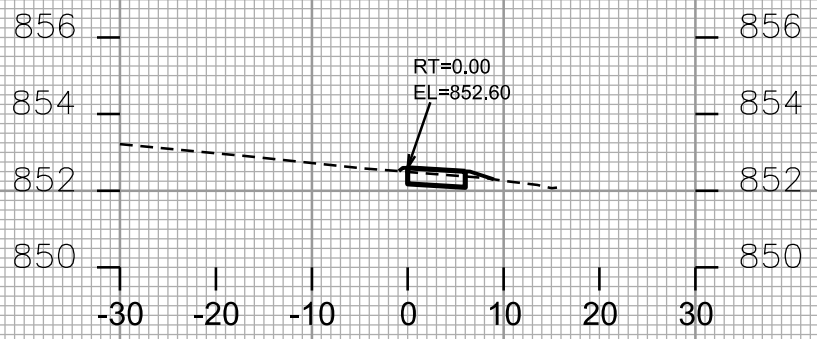
CITY OF MADISON

PLOT SCALE: _____

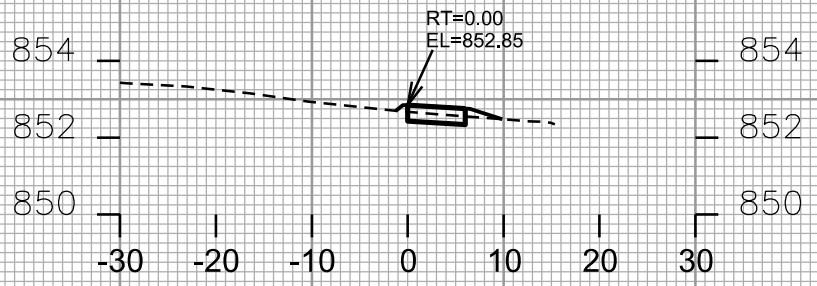
PLOT NAME: _____

REV. DATE: _____

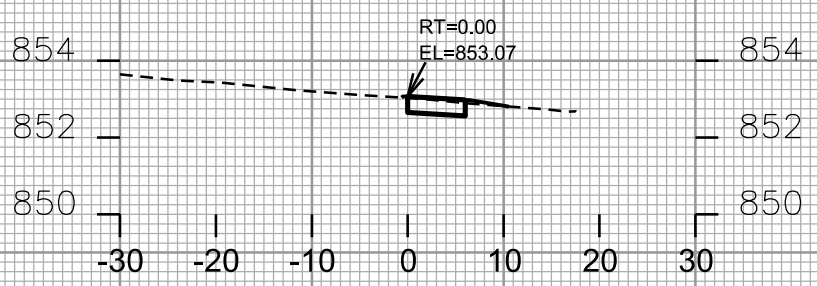
ORIGINATOR: CITY OF MADISON - STREETS DIVISION



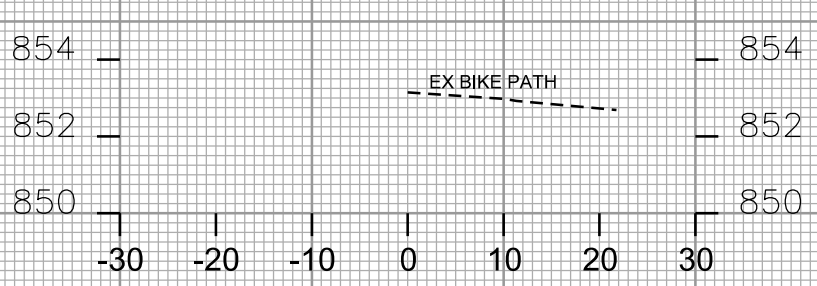
STA. 10+75



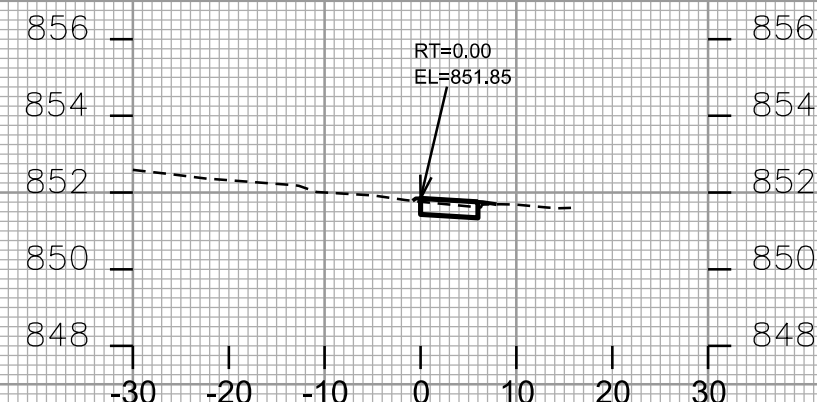
STA. 10+50



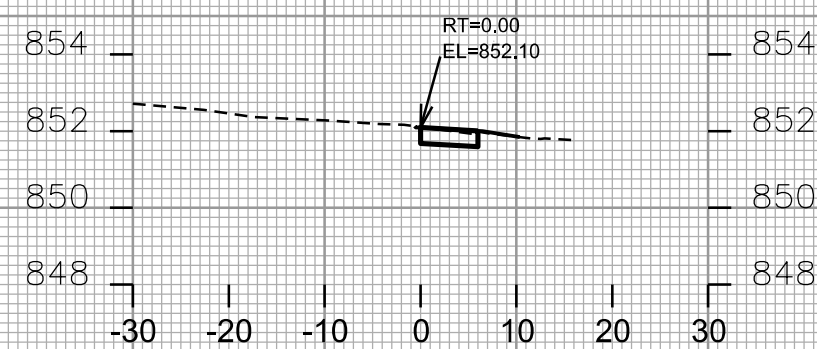
STA. 10+25



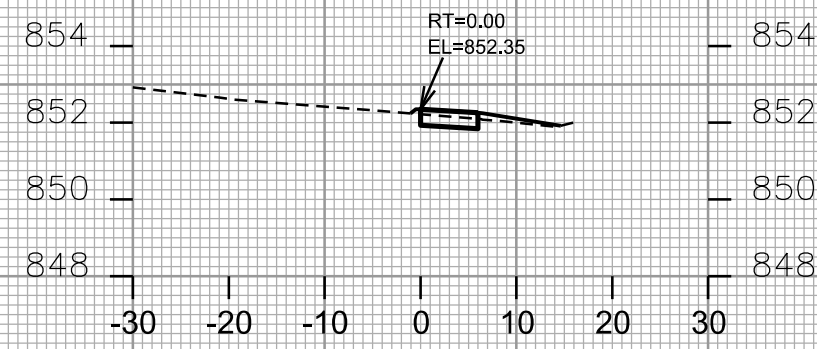
STA. 10+00



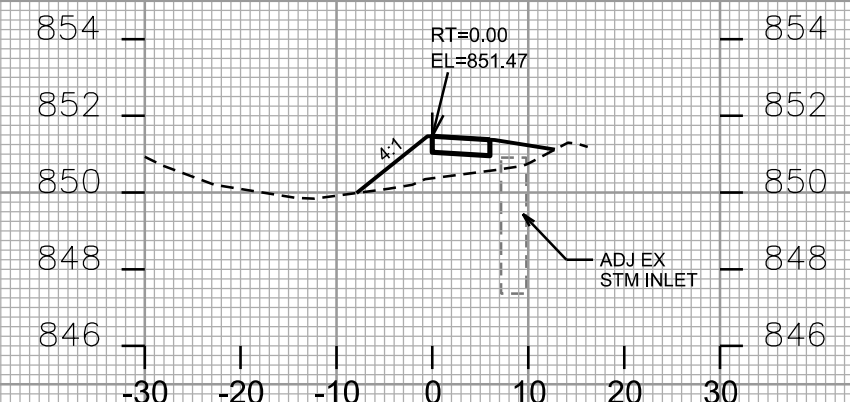
STA. 11+50



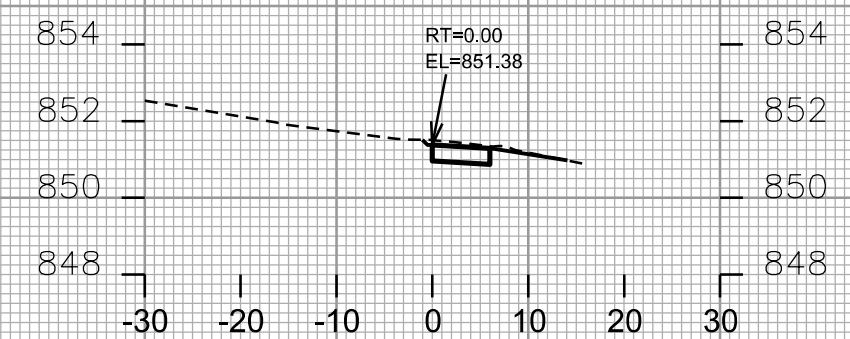
STA. 11+25



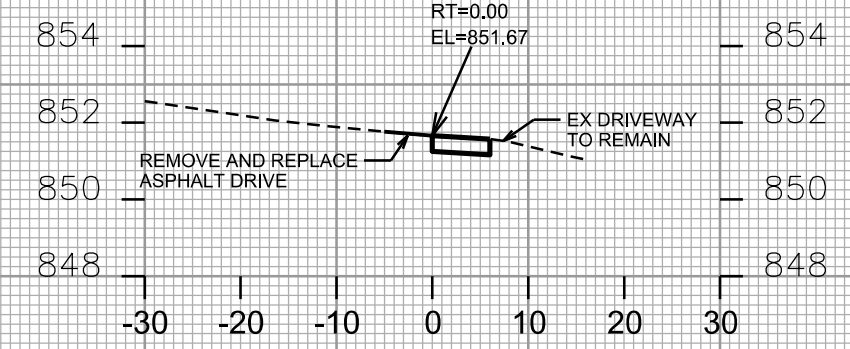
STA. 11+00



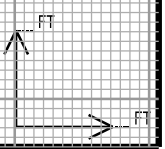
STA. 12+25



STA. 12+00



STA. 11+75



CROSS SECTIONS

NORTH SHORE DRIVE

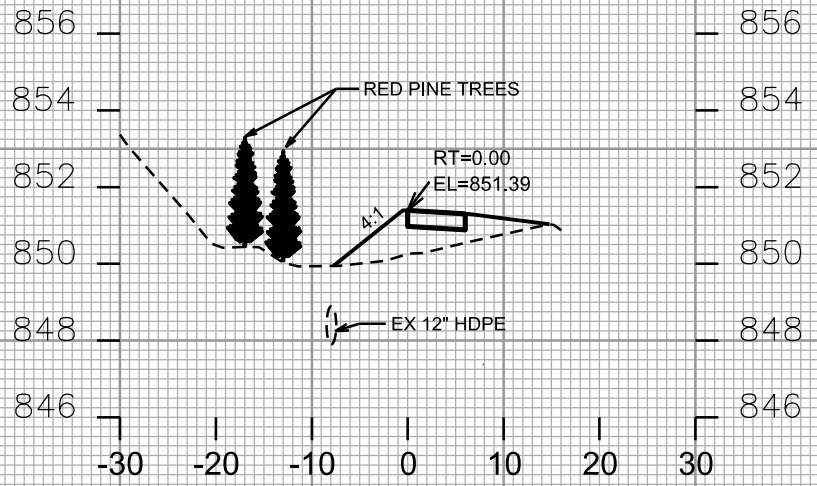
CITY OF MADISON

PLOT SCALE: _____

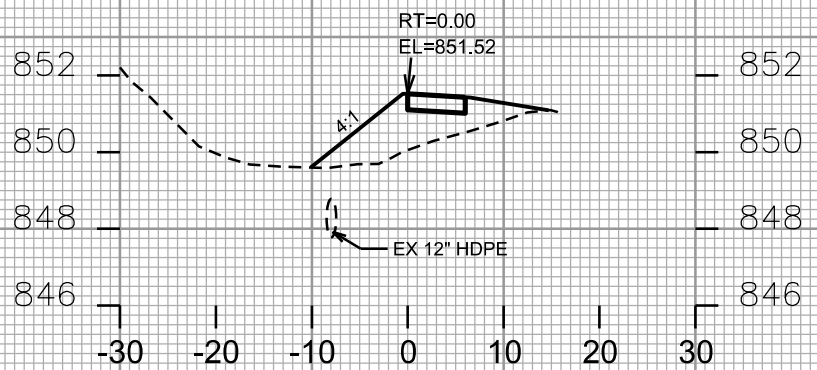
PLOT NAME: _____

REV. DATE: _____

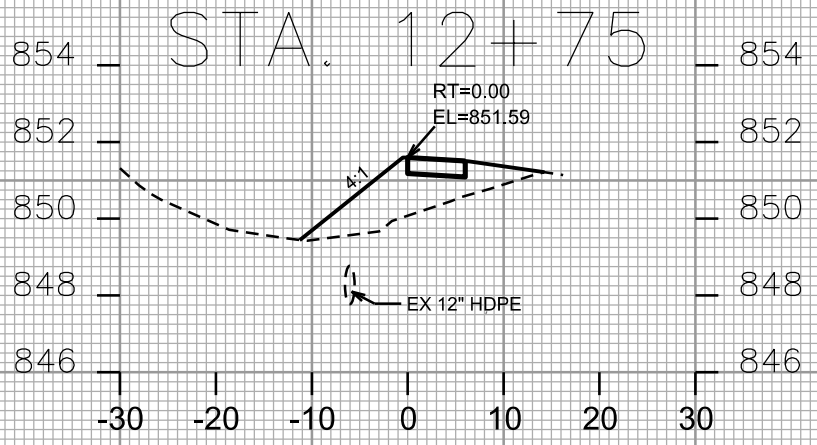
ORIGINATOR: CITY OF MADISON, STREETS DIVISION



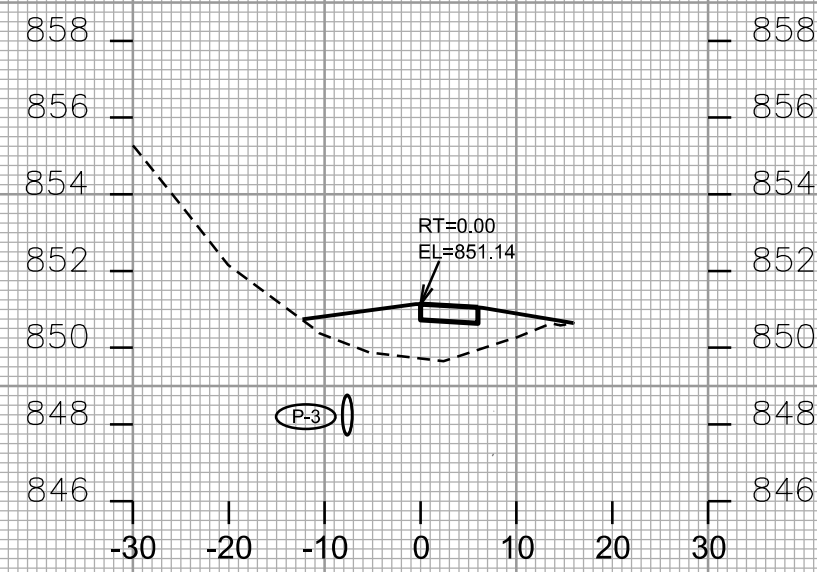
STA. 13+00



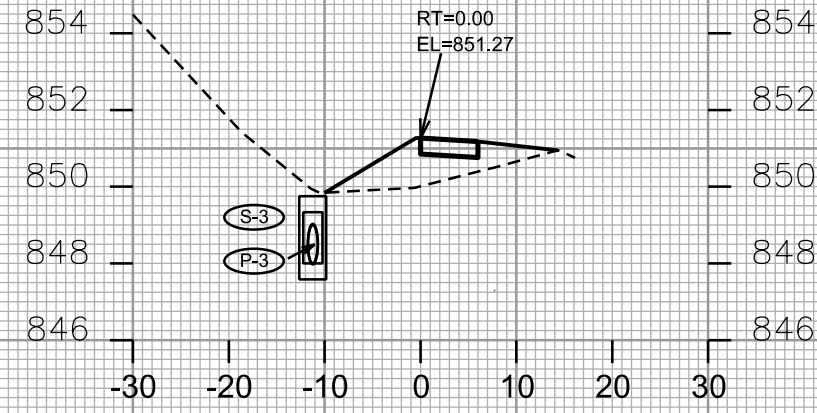
STA. 12+75



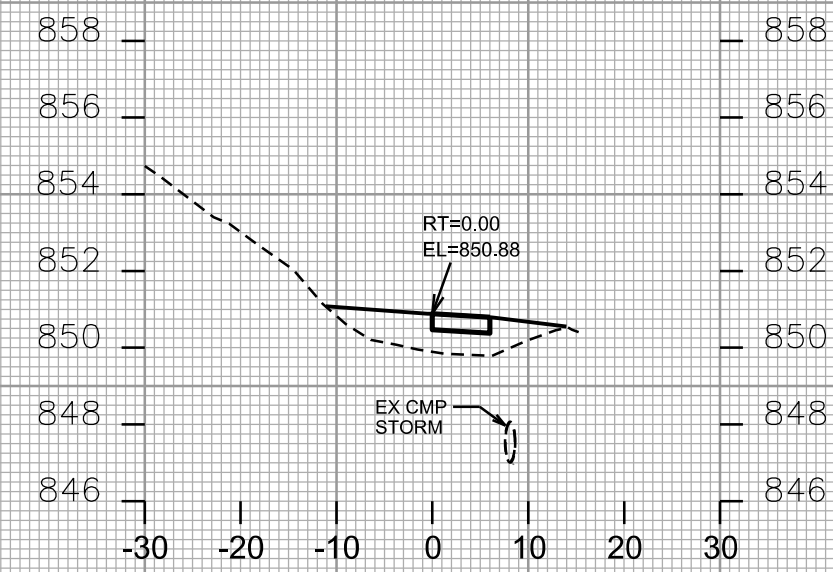
STA. 12+50



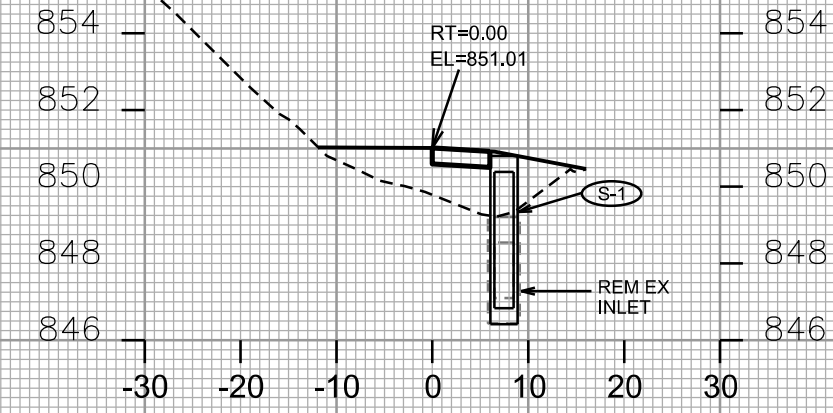
STA. 13+50



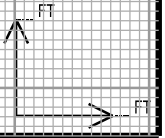
STA. 13+25



STA. 14+00



STA. 13+75



CROSS SECTIONS

NORTH SHORE DRIVE

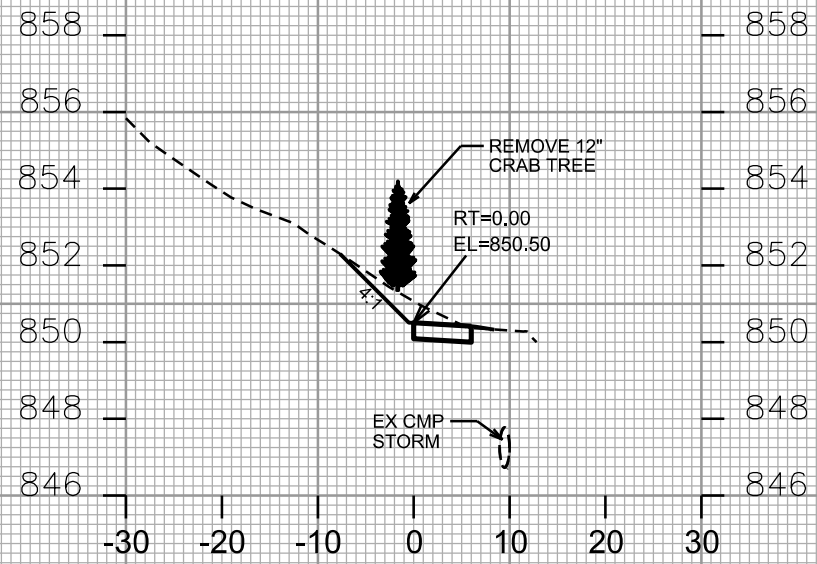
CITY OF MADISON

PLOT SCALE:

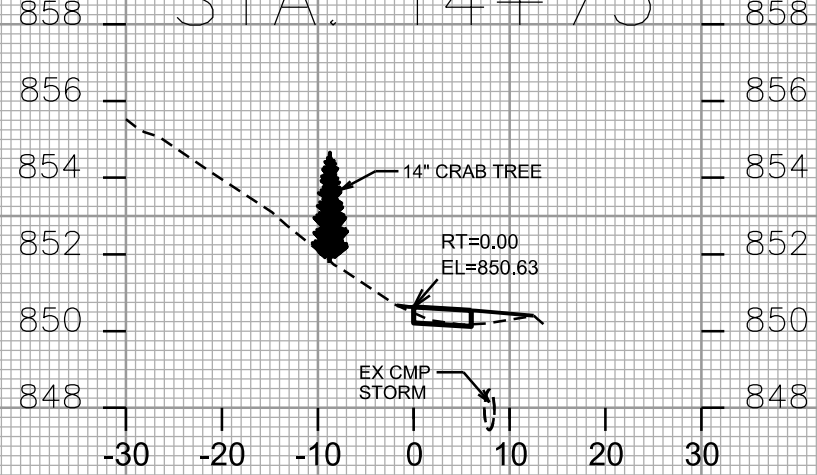
PLOT NAME:

REV. DATE:

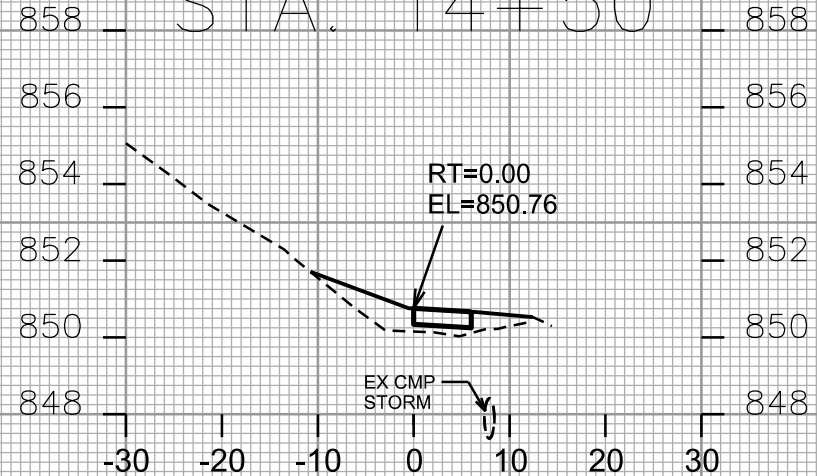
ORIGINATOR: CITY OF MADISON, STREETS DIVISION



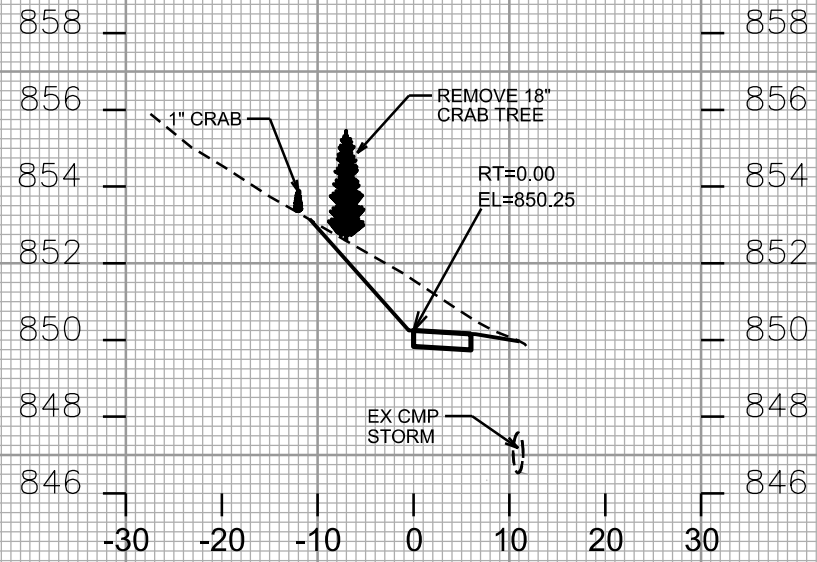
STA. 14+75



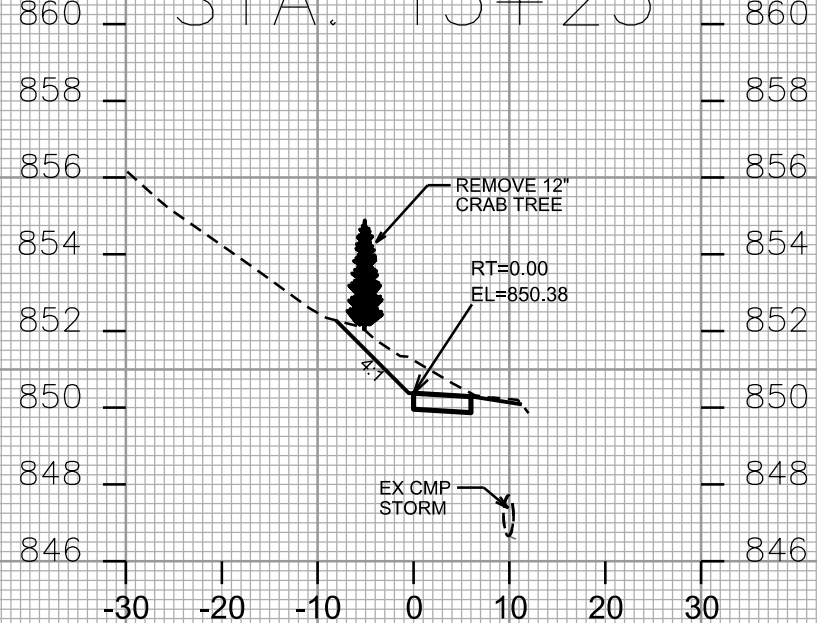
STA. 14+50



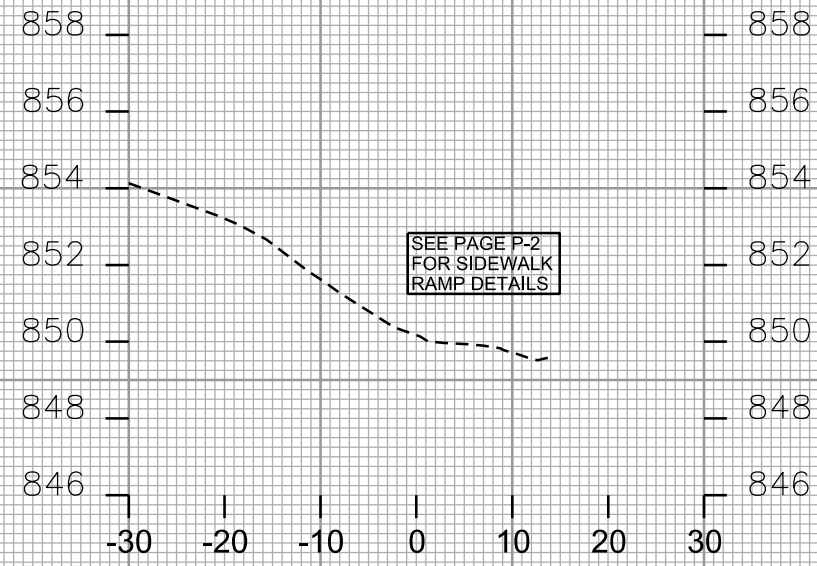
STA. 14+25



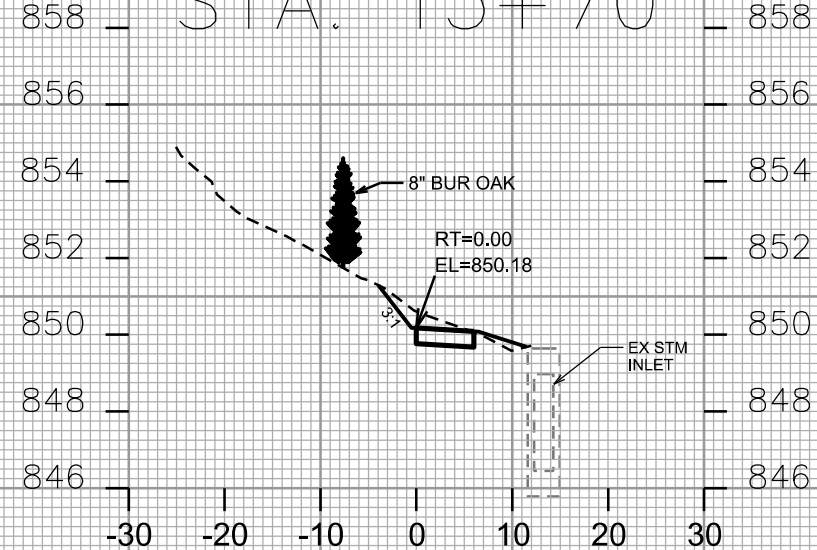
STA. 15+25



STA. 15+00



STA. 15+70



STA. 15+50

